

User Manual



color checker®
PASSPORT

ColorChecker Passport

ColorChecker Passport is a unique solution for any photographer looking for accurate, consistent color and creative flexibility – especially those working in RAW format. ColorChecker Passport includes a set of three ColorChecker photographic targets, both a desktop camera calibration application and an Adobe® Photoshop® Lightroom® camera calibration plug-in to create DNG profiles that encompass your specific camera, lens and lighting conditions for use in a RAW workflow – everything you need to attain full creative control from image capture to post-processing.

What's Included

A set of three ColorChecker photographic targets housed in a functional plastic case that's small enough to fit in your pocket, yet sturdy enough to go everywhere you go.

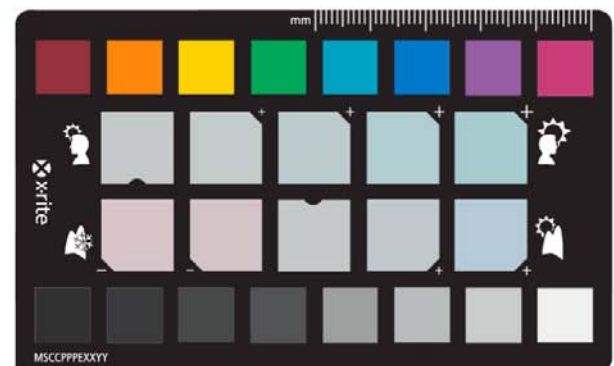
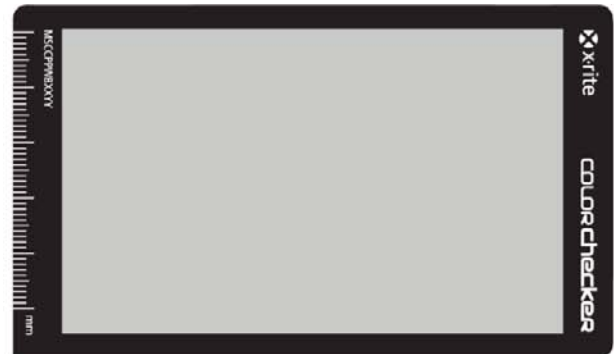
- ColorChecker White Balance target, a spectrally-neutral white balance target that provides in-camera white balancing for both JPEG and RAW photography.
- ColorChecker Classic, the industry standard 24-patch ColorChecker target for fine tuning critical color and building custom DNG profiles.
- ColorChecker Creative Enhancement target with spectrum patches to ensure color fidelity across all hues, adjust white balance, verify exposure and make creative portrait and landscape enhancements.

The ColorChecker Passport Desktop Application to create DNG profiles for use in a RAW workflow to help you achieve consistent results from image to image, regardless of the camera and lighting environment.

- Creation of DNG and dual-illuminant DNG profiles that can be used with Adobe RAW processing applications.
- Repeatable, creative white balancing with warmer or cooler effects in RAW processing software.
- Accurate color correction that can be applied to one photo or a group of images, providing consistency within shoots.

The ColorChecker Passport Lightroom plug-in for creating DNG profiles.

This user guide will teach you how to use ColorChecker Passport and associated software in a color managed workflow that is customized to your individual needs.



Why Color Management?

Before we get into detail about how to use ColorChecker Passport, it's important to understand a little about Color Management and how this tool fits into a color managed workflow.

The art of color management is all about getting your colors to match from input to output. That means your camera captures true colors, your monitor displays them accurately, and your printer produces a photo that is true to the original scene. With so many input and output devices, this can be a challenge. However, technology has come a long way in the past few years, and creating a color-managed workflow is no longer reserved for just photo professionals.

