



KONICA MINOLTA

MULTI GLOSS 268A
UNI GLOSS 60A
UNI GLOSS 60CT
UNI GLOSS 60S

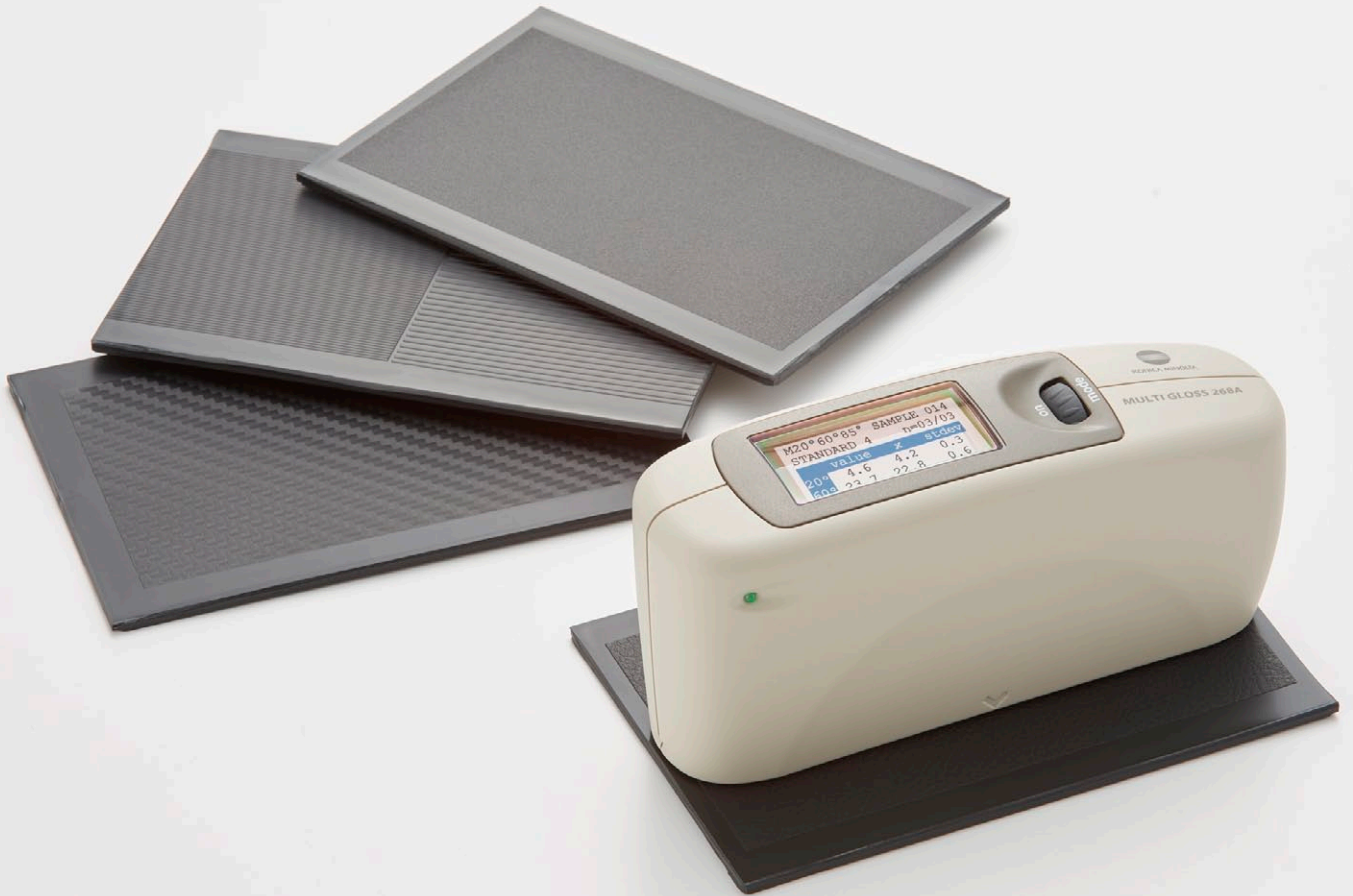


**New GM series gloss
meters offer even
higher versatility !**



■ **MULTI GLOSS 268A** (Measurement geometry: 20°, 60°, 85°; Successor to MULTI GLOSS 268Plus)

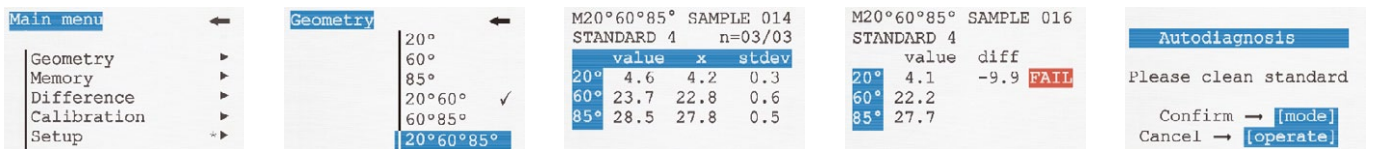
■ **UNIL GLOSS 60A** (Measurement geometry: 60°; Successor to UNI GLOSS 60Plus)



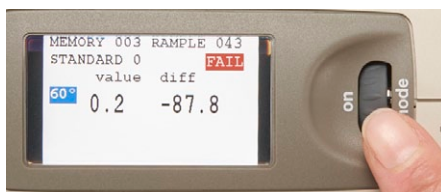
[Main features]

- Color LCD greatly improves usability and viewing of measurement results.
- New software "smart-lab Gloss" comes standard with the instrument, allowing you to transfer data from the instrument to a PC or to take online measurements.
- A single AA alkaline battery provides approximately 4,000 measurements.
- Display in ten languages.
- * Communication via USB only.

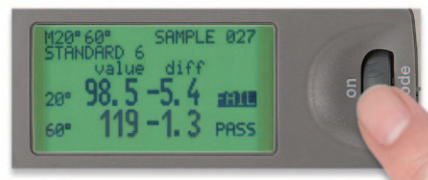
[Screen examples]



● **Brighter, easier-to-read display**



New GM series model



Previous model

■ UNI GLOSS 60CT (Measurement geometry: 60°) High inter-instrument agreement model

With high measurement accuracy at low gloss levels, this model is suitable when multiple glossmeters are used in your company or between your company and suppliers or customers. It can be used for measuring the interior parts of cars, etc.



Repeatability : 0.1 GU from 0.0 to 19.9 GU
(0.2 GU for UNI GLOSS 60A)

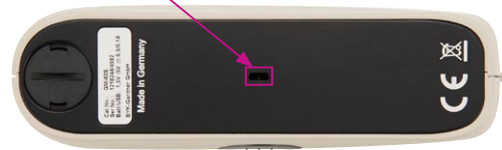
Inter-instrument agreement : 0.2 GU from 0.0 to 19.9 GU
(0.5 GU for UNI GLOSS 60A)

■ UNI GLOSS 60S (Measurement geometry: 60°) Small aperture model

The small measurement area of 2 mm x 4 mm is suitable for measuring minute areas or curved surfaces.



Measurement area: 2 mm x 4 mm (9 mm x 15 mm for UNI GLOSS 60A)



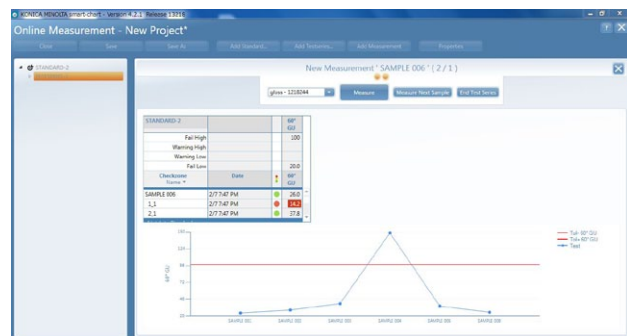
■ Gloss Data Software smart-chart (smart-lab Gloss)

● Outline

- Allows transferring data measured off-line from the instrument to a PC or taking on-line measurements.
- Allows creating professional QC reports with graphs and/or tables.
- Standard specifications can be set to enable Pass, Warning, or Fail judgement display and inclusion in reports.
- Allows expressing the stability of a manufacturing process as a trend graph per project for management of laboratory work.

● Main features

- Data transfer from the instrument to a PC
- On-line measurement with the instrument connected to a PC
- Creation of reports
- Determination of Pass/Warning/Fail
- Display of trend graphs



● Specifications

<System requirements>

OS : Windows® 7 SP1, Windows® 8.1, Windows® 10
Microsoft® .NET Framework 4 SP1

CPU : Core 2 Duo, 2.2 GHz, i7 or higher (recommended)

Memory : 4 GB RAM (8 GB or more recommended)

Hard disk : 2 GB of available hard disk space

Display : 1,280 x 1,024 pixels or better

Interface : USB port

<Compatible instruments>

MULTI GLOSS 268A, UNI GLOSS 60A, UNI GLOSS 60CT,
UNI GLOSS 60S

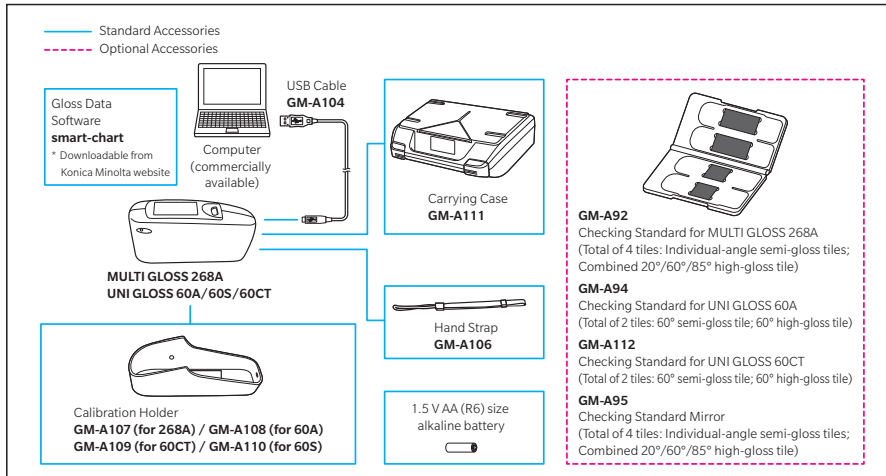
* Not compatible with MUTLI GLOSS 268Plus, UNI GLOSS 60Plus

* Customers who have purchased a compatible GM series model (MULTI GLOSS 268A, UNI GLOSS 60A, UNI GLOSS 60CT, or UNI GLOSS 60S) can download the software from our website free of charge.

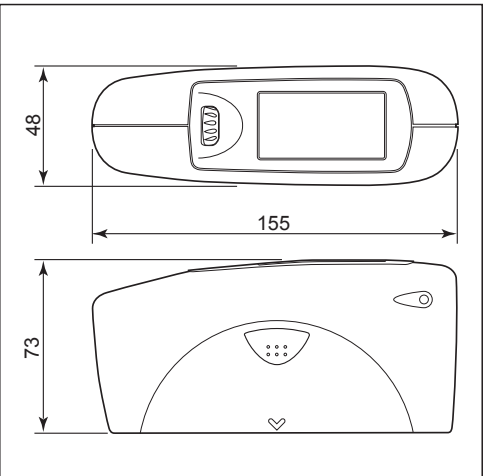
Main Specifications

Model	MULTI GLOSS 268A	UNI GLOSS 60A	UNI GLOSS 60S	UNI GLOSS 60CT
Measurement geometry	20°, 60°, 85°	60°	60°	60°
Size of measurement spot	20°: 10 × 10 mm	–	–	–
	60°: 9 × 15 mm	60°: 9 × 15 mm	60°: 2 × 4 mm	60°: 9 × 15 mm
	85°: 5 × 38 mm	–	–	–
Standard compliance	ISO 2813, ASTM D 523, ASTM D 2457, DIN 67530, ISO 7668 (excluding UNI GLOSS 60S), JIS Z 8741 (excluding UNI GLOSS 60S)			
Measurement range	20°: 0.0 to 2,000 GU	–	–	–
	60°: 0.0 to 1,000 GU	60°: 0.0 to 1,000 GU	60°: 0.0 to 1,000 GU	60°: 0.0 to 1,000 GU
	85°: 0.0 to 160 GU	–	–	–
Resolution	0.0 to 99.9 GU : 0.1 GU 100 to 2,000 GU : 1 GU	0.0 to 99.9 GU : 0.1 GU 100 to 1,000 GU : 1 GU		–
	0.0 to 99.9 GU : 0.2 GU 100 to 2,000 GU : 0.2% of reading	0.0 to 99.9 GU : 0.2 GU 100 to 1,000 GU : 0.2% of reading		0.0 to 19.9 GU : 0.1 GU 20.0 to 99.9 GU : 0.2 GU 100 to 1,000 GU : 0.2% of reading
Inter-instrument agreement	0.0 to 99.9 GU : 0.5 GU 100 to 2,000 GU : 0.5% of reading	0.0 to 99.9 GU : 0.5 GU 100 to 1,000 GU : 0.5% of reading		0.0 to 19.9 GU : 0.2 GU 20.0 to 99.9 GU : 0.5 GU 100 to 1,000 GU : 0.5% of reading
Memory	999 measurements with date and time			
Difference measurement	Memory for 50 standard			
Battery performance	Approx. 4,000 measurements (when using 1.5 V AA (R6) size alkaline battery)			
Measurement time	0.5 seconds			
Auto power off	10 to 99 seconds selectable			
Languages	English, Spanish, German, French, Italian, Russian, Polish, Portuguese, Turkish, Japanese			
Measurement mode	Normal mode (Sample mode, Statistics, Continuous, Basic mode); Difference mode			
Interface	USB 2.0			
Operation temperature/ humidity range	15 to 40°C relative humidity max. 85% (at 35°C) with no condensation			
Storage temperature/humidity range	-10 to 60°C relative humidity max. 85% (at 35°C) with no condensation			
Power	1.5 V AA (R6) size alkaline battery, or via USB-port of PC			
Size (W x H x D)	155 × 73 × 48 mm			
Weight	Approx. 400 g			
Display	Color LCD			
Software	smart-chart (smart-lab Gloss)			

System Diagram




Dimensions (Units: mm)



- KONICA MINOLTA, the Konica Minolta logo and symbol mark, and "Giving Shape to Ideas" are registered trademark or trademarks of Konica Minolta, Inc.
- Displays shown are for illustration purpose only.
- The specifications and appearance shown herein are subject to change without notice.

SAFETY PRECAUTIONS



For correct use and for your safety, be sure to read the instruction manual before using the instrument.

● Be sure to use the specified batteries. Using improper batteries may cause a fire or electric shock.

ISO Certifications of KONICA MINOLTA, Inc., Sakai Site



JQA-QMA15888
Design, development, manufacture/
manufacturing management, calibration, and
service of measuring instruments



JQA-E-80027
Design, development,
manufacture, service and sales
of measuring instruments

KONICA MINOLTA, INC.
Konica Minolta Sensing Americas, Inc.
Konica Minolta Sensing Europe B.V.

Osaka, Japan
 New Jersey, U.S.A.
 European Headquarter /BENELUX
 German Office
 French Office
 UK Office
 Italian Office
 Swiss Office
 Nordic Office
 Polish Office
 Turkish Office
 SE Sales Division
 Beijing Office
 Guangzhou Office
 Chongqing Office
 Qingdao Office
 Wuhan Office

Konica Minolta (CHINA) Investment Ltd.

Konica Minolta Sensing Singapore Pte Ltd.
Konica Minolta Sensing Korea Co., Ltd.

Addresses and telephone/fax numbers are subject to change without notice. For the latest contact information, please refer to the KONICA MINOLTA Worldwide Offices web page :

Phone : 888-473-2656 (in USA), 201-236-4300 (outside USA)
 Nieuwegein, Netherlands **Phone** : +31 (0)30 248-1193
 München, Germany **Phone** : +49(0)89 4357 156 0
 Roissy CDG, France **Phone** : +33(0)1 80 11 10 70
 Warrington, United Kingdom **Phone** : +44(0)1925 467300
 Cinisello Balsamo, Italy **Phone** : +39 02849488.00
 Dietikon, Switzerland **Phone** : +41 (0)43 322-9800
 Västra Frölunda, Sweden **Phone** : +46(0)31 7099464
 Wrocław, Poland **Phone** : +48(0)71 73452-11
 Istanbul, Turkey **Phone** : +90 (0) 216-528 56 56
 Shanghai, China **Phone** : +86- (0)21-5489 0202
 Beijing, China **Phone** : +86- (0)10-8522 1551
 Guangdong, China **Phone** : +86- (0)20-3826 4220
 Chongqing, China **Phone** : +86- (0)23-6773 4988
 Shandong, China **Phone** : +86- (0)532-8079 1871
 Hubei, China **Phone** : +86- (0)27-8544 9942
 Singapore **Phone** : +65 6563-5533
 Goyang-si, Korea **Phone** : +82(0)2-523-9726

Fax : 201-785-2482
 +31 (0)30 24 81 211
 +49(0)89 4357 156 99
 +33(0)1 80 11 10 82
 +44(0)1925 711143
 +39 02849488.30
 +41 (0)43 322-9809
 +48 (0)71 734 52 10
 +90 (0) 212-253 49 69
 +86- (0)21-5489 0005
 +86- (0)10-8522 1241
 +86- (0)20-3826 4223
 +86- (0)23-6773 4799
 +86- (0)532-8079 1873
 +86- (0)27-8544 9991
 +65 6560-9721
 +82(0)31-995-6511

<https://konicaminolta.com/instruments/network>