

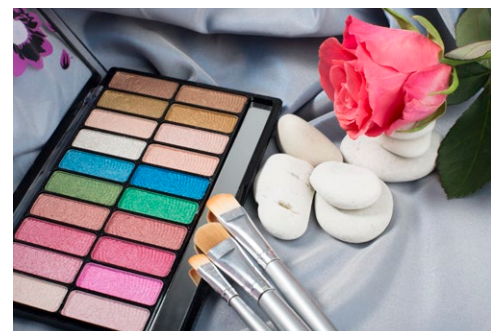
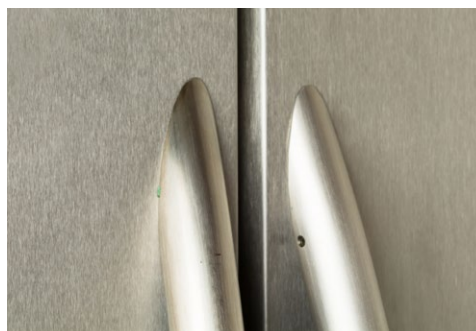


KONICA MINOLTA

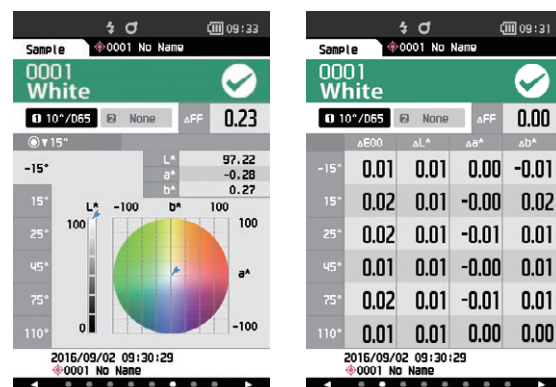


# Spectrophotometer **CM-M6**

**High precision, multi-angle model for  
measuring from 6 angles!**



## Display examples

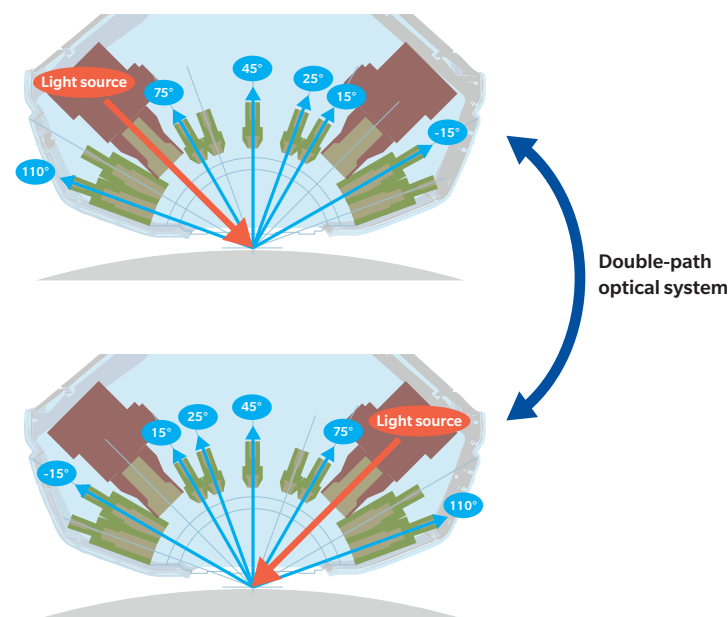


The CM-M6 has a built-in 3.5-inch color LCD that can display measured values both numerically and on colored graphs, for easier visualization of results.

**The CM-M6 is a compact, lightweight, multi-angle spectrophotometer. Incorporating a new patented 'double-path optical system', it exhibits outstanding versatility in various measuring applications.**



## Multi-angle measurements (1 light source, 6 viewing angles)



Illumination angle: 45°

Aspecular viewing angles: -15°, 15°, 25°, 45°, 75°, 110°

\* These 6 viewing angles make it possible to detect metallic and pearl colors with higher accuracy than previous spectrophotometers.

## Double-path optical system

The CM-M6 has duplicate illumination/viewing systems symmetrical about its center axis. This system ensures high measuring stability even when the instrument is slightly tilted and makes it possible to stably measure R300 curved surfaces like side mirrors.

## Compact, lightweight, vertical format



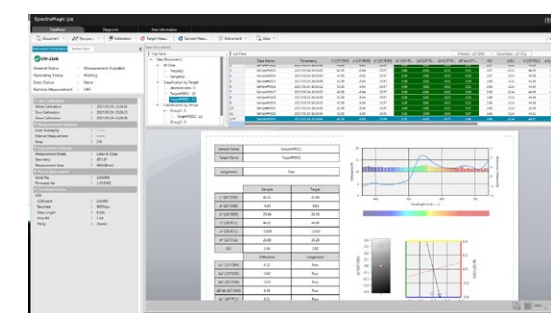
The compact body (with hand strap) can be stably held with one or two hands. Moreover, it is loaded with features ideal for measuring vehicle exteriors such as a rubber cover around the measurement aperture to safeguard measurement subjects against scratching and Bluetooth® support (option) for sending measurement data to remote devices over wireless connections.

## Ø6 mm diameter viewing beam for measuring small surfaces

The viewing beam is 6 mm in diameter, so small surfaces that were hard to measure with earlier models can be stably measured.



## (Option) Color Data Software SpectraMagic DX (Version. 1.2) Professional Edition Lite Edition



The new Color Data Software SpectraMagic DX enables easy management of data measured with the CM-M6, and offers a new Instrument Diagnosis function to help ensure continued high instrument performance.

OS	: Windows® 8.1Pro 32-bit / 64-bit, Windows® 10 Pro 32-bit / 64-bit
CPU	: Intel® Core i5 2.7GHz or higher (recommended)
Memory	: At least 2 GB (4 GB or more recommended)
Hard disk	: 20 GB of available hard disk space At least 10 GB of available disk space is required on the system drive (drive where the OS is installed) for database.
Display	: Display hardware capable of displaying 1,280 x 768 pixels/16-bit color or better
Other	: Two USB ports required for protection key if used. Not necessary for electronic license. USB or serial port required for connection to instrument.

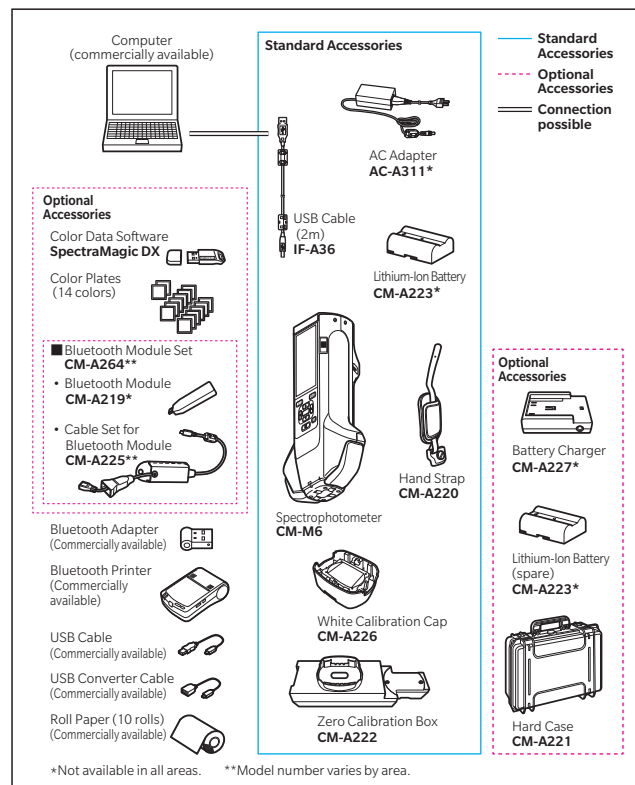
• Windows® is a trademark or registered trademark of Microsoft Corporation in the USA and other countries.  
• Intel® Core is a trademark or registered trademark of Intel Corporation in the USA and other countries.



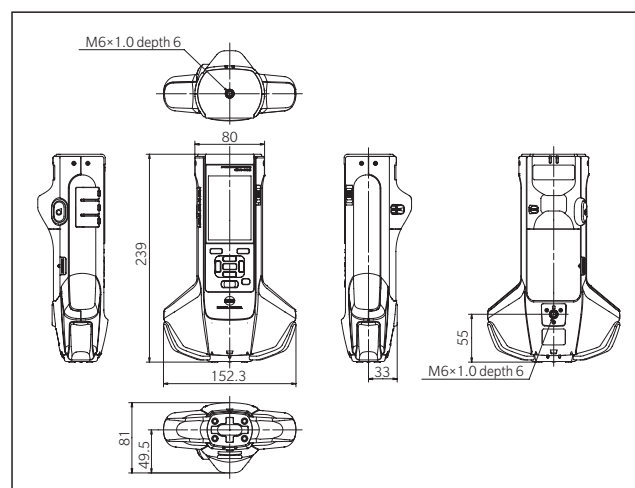
## Main Specifications

Model	Spectrophotometer CM-M6
Illumination/viewing system	45° illumination : ±15°/15°/25°/45°/75°/110° aspecular viewing angles with double-path technology
Detector	Dual 40-element silicon photodiode arrays
Spectral separation device	Linear variable filter
Wavelength range	400-700 nm
Wavelength pitch	10 nm
Measurement range	6 angles: 0-600%; Output/display resolution : 0.01 %
Light source	High-CRI white LED
Measurement time	Approx. 4.5 seconds
Minimum measurement interval	Approx. 5 seconds
Battery performance	Approx. 1,500 measurements/charge (at 10-second intervals at 23°C)
Measurement/illumination area	Ø6 mm/Ø12 mm
Repeatability	Chromaticity value : Standard deviation within $\Delta E^*ab$ 0.05 (When a white calibration plate is measured 30 times at 10-second intervals after white calibration)
Inter-instrument agreement	Within $\Delta E^*ab$ 0.2 (Average for 12 BCRA Series II color tiles compared to values measured with a master body under Konica Minolta standard measurement conditions)
Observer	2° or 10° Standard Observer
Illuminant	A, C, D50, D65, F2, F6, F7, F8, F10, F11, F12 User illuminant (simultaneous evaluation with two illuminants possible)
Displayed data	Colorimetric values, color-difference values/graph, line graph (colorimetric/color-difference values), pass/fail judgement
Colorimetric data	$L^*a^*b^*$ , $L^*C^*h$
Indexes	M1, FF value (Flop value)
Color-difference formula	$\Delta E^*ab$ (CIE 1976), $\Delta(L^*a^*b^*)$ , $\Delta(L^*C^*H^*)$ , CMC (l:c), $\Delta E^*94$ (CIE 1994), $\Delta E_{00}$ (CIE DE2000), $\Delta E_{DIN}$ (DIN 6175), $\Delta E_{99o}$ (DIN 99o), $\Delta E_{Audi}$ (Audi 2000)
Data memory	Target data: 200 measurements; Sample data: 800 measurements
Pass/Fail judgement	Tolerances can be set for color-difference values
Displayed languages	Japanese, English, German, French, Italian, Spanish, Chinese (Simplified), Portuguese, Russian, Turkish, Polish
Display	3.5-inch TFT color LCD
Interfaces	USB2.0, Bluetooth (Option)
Power	Rechargeable lithium-ion battery (removable), dedicated AC adapter
Charging time	Approx. 5 hours when no charge remains
Operation temperature/humidity range	0-40 °C, relative humidity is 85% or less (at 35 °C) with no condensation
Storage temperature/humidity range	-20-45 °C, relative humidity is 85% or less (at 35 °C) with no condensation
Size (W×H×D)	Approx. 152 × 239 × 81 mm
Weight	Approx. 1.1 kg (Including battery)


## System Diagram



## Dimensions (Units : mm)



- KONICA MINOLTA, the Konica Minolta logo and symbol mark, "Giving Shape to Ideas" and SpectraMagic are registered trademarks or trademarks of Konica Minolta, Inc.
- Bluetooth® is a registered trademark of Bluetooth SIG, Inc. and is used under license agreement.
- Displays shown are for illustration purpose only.
- The specifications and appearance shown herein are subject to change without notice.



### SAFETY PRECAUTIONS

For correct use and for your safety, be sure to read the instruction manual before using the instrument.

- Always connect the instrument to the specified power supply voltage. Improper connection may cause a fire or electric shock.
- Be sure to use the specified batteries. Using improper batteries may cause a fire or electric shock.

### ISO Certifications of KONICA MINOLTA, Inc., Sakai Site



ISO 9001

JQA QMA15888

Design, development, manufacture/  
manufacturing management, calibration, and  
service of measuring instruments



ISO 14001

JQA E-80027

Design, development,  
manufacture, service and sales  
of measuring instruments

<b>KONICA MINOLTA, INC.</b>	Osaka, Japan				
<b>Konica Minolta Sensing Americas, Inc.</b>	New Jersey, U.S.A.	PHONE: (888)473-2656 (in USA), +1(201)236-4300 (outside USA)	FAX: +1(201)785-2480	E-Mail: service.us@konicaminolta.com	
<b>Konica Minolta Sensing Europe B.V.</b>	European HQ / BENELUX German Office French Office UK Office Italian Office Swiss Office Nordic Office Polish Office Turkish Office	Nieuwegein, Netherlands München, Germany Roissy CDG Cedex, France Warrington, United Kingdom Cinisello Balsamo, Italy Dietikon, Switzerland VÄSTRA FRÖLUNDA, Sweden Wrocław, Poland Istanbul, Turkey	PHONE: +31(0)30 248-1193 PHONE: +49(0)89 4357 156 0 PHONE: +33(0)1 80 11 10 70 PHONE: +44(0)1925 467300 PHONE: +39 02849488.00 PHONE: +41(0)43 322-9800 PHONE: +46(0)31 7099464 PHONE: +48(0)71 73452-11 PHONE: +90(0)216-528 56 56	E-Mail: info.benelux@seu.konicaminolta.eu E-Mail: info.germany@seu.konicaminolta.eu E-Mail: info.france@seu.konicaminolta.eu E-Mail: info.uk@seu.konicaminolta.eu E-Mail: info.italy@seu.konicaminolta.eu E-Mail: info.switzerland@seu.konicaminolta.eu E-Mail: info.nordic@seu.konicaminolta.eu E-Mail: info.poland@seu.konicaminolta.eu E-Mail: info.sensing@konicaminolta.com.tr	
<b>Konica Minolta (CHINA) Investment Ltd.</b>	SE Sales Division Beijing Office Guangzhou Office Chongqing Office Qingdao Office Wuhan Office Shenzhen Office	Shanghai, China Beijing, China Guangzhou, China Chongqing, China Shandong, China Hubei, China Shenzhen, China	PHONE: +86(0)21-6057-1089 PHONE: +86(0)10-8522 1551 PHONE: +86(0)20-3826 4220 PHONE: +86(0)23-6773 4988 PHONE: +86(0)532-8079 1871 PHONE: +86(0)27-8544 9942 PHONE: +86(0)755-2868 7535	E-Mail: hcn_sensing@gcp.konicaminolta.com E-Mail: hcn_sensing@gcp.konicaminolta.com E-Mail: hcn_sensing@gcp.konicaminolta.com E-Mail: hcn_sensing@gcp.konicaminolta.com E-Mail: hcn_sensing@gcp.konicaminolta.com E-Mail: hcn_sensing@gcp.konicaminolta.com E-Mail: hcn_sensing@gcp.konicaminolta.com	
<b>Konica Minolta Sensing Singapore Pte. Ltd.</b>	Singapore		PHONE: +65 6563-5533	E-Mail: se-service.sg@konicaminolta.com	
<b>Konica Minolta Sensing Korea Co., Ltd.</b>	Korean HQ / Kintex Cheonan Office	Goyang-si, Korea Cheonan-si, Korea	PHONE: +82(0)2-523-9726 PHONE: +82(0)41-556-9726	FAX: +82(0)31-995-6511	

Addresses and telephone/fax numbers and e-mail address are subject to change without notice.  
For the latest contact information, please refer to KONICA MINOLTA Worldwide Offices web page:

<https://konicaminolta.com/instruments/network>