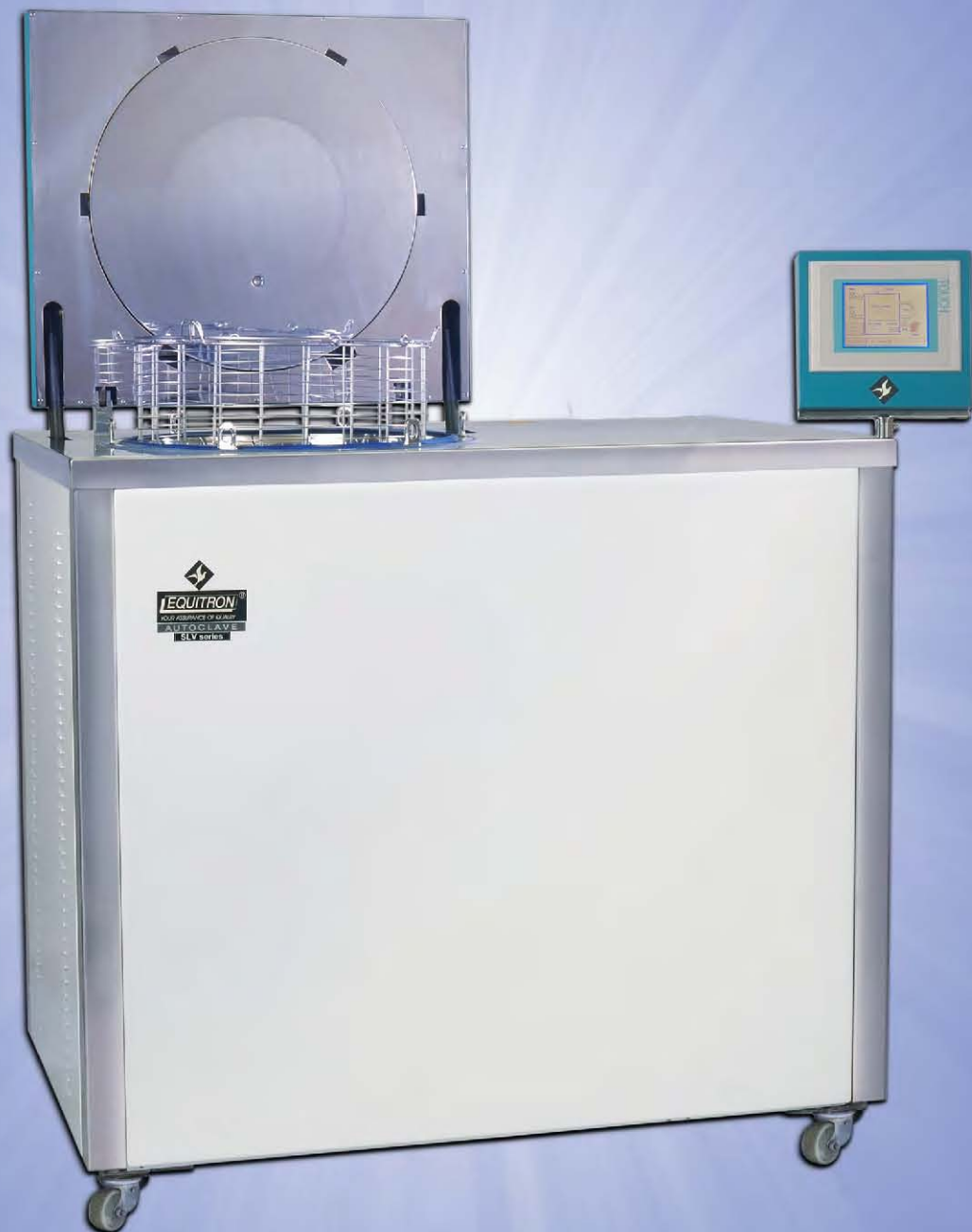


**EQUITRON<sup>®</sup>**

**AUTOCLAVE - SLV**



**Versatility**

**In steam sterilisation**

**As never before....**





With over four decades of experience in design and manufacture of Autoclaves, we at Medica take immense pride in presenting the Single Lever Vacuum (SLV) series of Vertical Autoclaves. The SLV provides enhanced capabilities to meet the stringent demands of today's Microbiologist.

The new and innovative **EQUITRON-SLV** has been designed to meet the strictest & varied requirements of the most demanding applications in the following sectors:

- Microbiology and Analysis Laboratories
- Research Institutes and Government Agencies
- Life Sciences and Genetic Engineering
- Pharmaceutical and Food Industries
- Hospital and Biomedical Sectors
- Waste Treatment
- Other industrial sectors and special technological applications

### **EQUITRON Advantages:**

- ❖ Unique single lever lock for lid, with single hand opening.
- ❖ Library with preset cycles of different load patterns, enables easy operation.
- ❖ Highly versatile programming and control system.
- ❖ Optional online print of cycle information with F0 calculations.
- ❖ Protection of personnel and products, thanks to temperature and pressure interlocks.

### **Construction:**

The SLV range, like all **EQUITRON** Autoclaves, is designed for ease of use and dependability and is manufactured under strict supervision. Each & every chamber is hydrostatically tested as per standards. Rigorous inspection standards and traceable calibration reports ensure dependable performance.

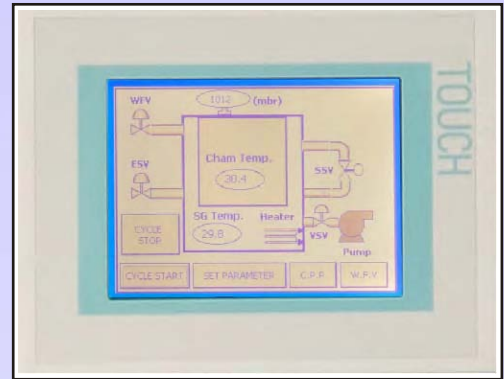
- ❖ Internal chamber and lid along with all wetted parts fabricated from Stainless Steel.
- ❖ Integral steam generator for steam on demand.
- ❖ Single lever pronged closure system with a patented Silicone Gasket (registered design No. 208774).
- ❖ Easy lift and closing of the lid by assisted support.
- ❖ PU Castors for ease of movement.
- ❖ Modular panel design - for easy access to all critical components.
- ❖ Built in validation port enables user for self calibration checks.
- ❖ Two independent gauges for steam generator & chamber.
- ❖ Manual release valve with a 0.2µ filter to normalise chamber pressure at the end of cycle - with sterile air.





## Control Systems:

- ❖ At the heart of *EQUITRON SLV* is a Programmable Logic Controller (PLC) with touch screen graphic display which provides for a flexible user friendly interface and accurate control.
- ❖ All the critical parameters including set parameters & alarms are displayed on the touch screen. The PLC controls and monitors each and every parameter which provides higher reliability:
  - Selection of preset cycles from cycle library
  - Preset Bowie Dick Test
  - User customisable cycle with flexibility of setting following parameters:
    - Number of negative pulses
    - Number of positive pulses
    - Sterilisation temperature
    - Sterilisation hold time
    - Vacuum drying
- ❖ Quarter turn rotating Touch Screen facilitates easy loading, unloading of material.
- ❖ Corrective action program on power failure.



## Safety:

- ❖ Every single Autoclave chamber is hydraulically tested to twice its operating pressure. Inspection as per set standards - right from the raw material inward stage, to in-process inspections to final tests and calibrations is conducted by qualified Engineers.
- ❖ Spring loaded safety valves for steam generator and chamber.
- ❖ Pressure Switch for over pressure detection in steam generator.
- ❖ Pressure interlock on door.
- ❖ Audio & visual alarms for:
  - Low water
  - Over temperature
  - Over pressure
- ❖ MCB for electrical safety.

## Utilities required:

- ❖ Electrical supply: An MCB of 230 VAC, 50 Hz, single phase, 32A for #7431SLV & 50A for #7441SLV.
- ❖ Water supply: Two connections of demineralized /purified water line with hardness and temperature less than 21 (German) and 30°C respectively. Tubing size required of ID 8mm.
- ❖ Exhaust/ drain line: Capable of handling steam temperatures of 121°C and pressure 2100 mbar steam/water.
- ❖ Foot print:
  - #7431SLV - 1055 x 665 mm external size; require at least 450mm on all sides.
  - #7441SLV - 1155 x 765 mm external size; require at least 450mm on all sides.
- ❖ Height (with lid open):
  - #7431SLV 1440 mm
  - #7441SLV 1590 mm
- ❖ Heater Wattage:
  - #7431SLV - 5 kW
  - #7441SLV - 7 kW
- ❖ Silicone Tubings size Ø8x11mm of required lengths from SLV to drain (2 nos).





### Documenting Options:

#### OPC:

Three additional temperature sensors (A,B,C) and an additional PLC print module are installed. This enables:

- ❖ Display of four sensors - 3 temperature (Top/Centre/Bottom) plus one pressure.
- ❖ Print to external DMP LX-300+ (Not part of standard supply) with date, time, set point, reading of controlling sensor, 3 temperature sensors & pressure.
- ❖ Print of process status with each print.
- ❖ Print of F0 value for Sensor A.
- ❖ Print interval user settable 15 - 600 seconds.



#### SCRT4P:

#SCRT4P Strip Chart Recorder (Point type) 4 temperature & 1 pressure channel

- ❖ The #SCRT4P is a compact recorder with a recording width of 100mm.
- ❖ Independent documenting by point method of 4 temperature & 1 pressure channels.
- ❖ The Recorder has a high speed of 6 dot / 10 sec.
- ❖ Pen servo unit uses ultra-small stepping motors.
- ❖ The measured value, channel number, alarm status and date & time are displayed



### SPECIFICATION & ORDERING DETAILS

Model*	Type of Autoclave	Working Chamber Size (Ø x D) / Capacity	External size (LWht) Lid Closed (Opened Ht)	Carrier (Ø x D)	App. Shipping Details Net / Gr. / Volume (on PALLET)
#7431SLV-	Vacuum	35 x 55 cm / 53 lit	105.5 x 66.5 x 106 (144) cm	1 of Ø30 x 50 cm	140 kg / 170 kg / 1.25 m <sup>3</sup>
#7441SLV-	Vacuum	45 x 71 cm / 113 lit	115.5 x 76.5 x 120 (159) cm	2 of Ø40 x 33 cm	190 kg / 230 kg / 1.70 m <sup>3</sup>

\* Add documenting option suffix OPC or SCRT4P wherever required.

All electrical appliances work on 230V AC, 50Hz, single phase. Other Voltages available on request. Due to continuous improvement in design, the product supplied may have modified features.

Our Other Products: Autoclave Vertical: Standard / PAD / Fully Automatic / Non Electric / Jacketed, Autoclave Portable: Standard / Automatic / Non Electric, Autoclave SLL Series: Vacuum, Autoclave SLE series, Table Top Autoclaves: Normal / Class B • Rotary Vacuum Evaporator • Vacuum Controller • Chilled Water Circulator • PTFE Diaphragm Vacuum Pump • BOD Incubator • BSC Clean Bench • Vacuum Oven • Water Still / Stone-fin / Automatic Water Still • Water Bath: Stirred (Constant) / Serological / Concentric Rings / Shaking / Refrigerated Circulating Bath • Round Bath: Clear Bottom / Immersion Series • Ultrasonic Bath: Digital / LCD • Dry Bah • Colony Counter • Hot plate with Magnetic Stirrer • Anaerobic Jar: SS / Polycarbonate • Pipette and Petri Dish Sterilizing Box • Test Tube Rack • ESR Westergren & Wintrobe Apparatus • Slide Staining Stand / Rack / Trough • Slide Trays • Slide Cabinet



## MultiLab

No.51/23, Arathoon Road, Off Appavu Lane,  
Royapuram, Chennai - 600 013. Tamil Nadu, India  
Ph:044-25984175, 45526026, 094441 62346  
Email: multilabindia@gmail.com, www.multilab.biz

